



Excelair Minimal Noise Exhaust Fan

Model:PCJ5.0,PCJ6.3



User's Manual

Table of Contents

General of Excelair Minimal Noise Exhaust Fan ————— 4

Excellence ————— 4

Description ————— 4

Precautions ————— 4

Installation Steps ————— 5

Dismantlement Steps ————— 5

Exhaust Fan Circuit Diagram ————— 6

Exhaust Fan with Anti- Insects Shutter Circuit Diagram ————— 7

Intallation Guide ————— 8

Sketch Map of PCJ5.0 Mounting Dimension ————— 8

Sketch Map of PCJ6.3 Mounting Diemnsion ————— 9

Sketch Map of AIS5.0 Anti-Insects Shutter Mounting Dimension ————— 10

Sketch Map of AIS6.3 Anti-Insects Shutter Mounting Dimension ————— 11

Sketch Map of Brick Wall Mounting ————— 12

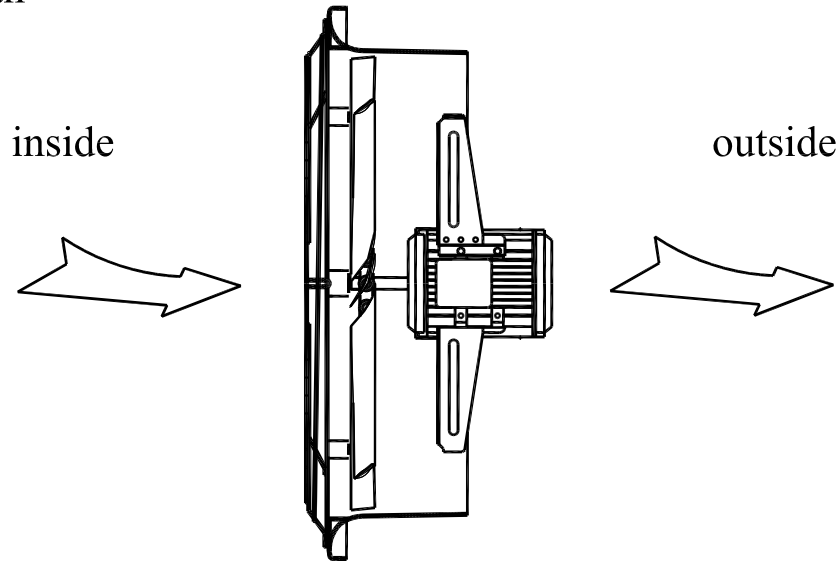
Sketch Map of Metal Wall Mounting ————— 13

Sketch Map of Window Mounting ————— 14

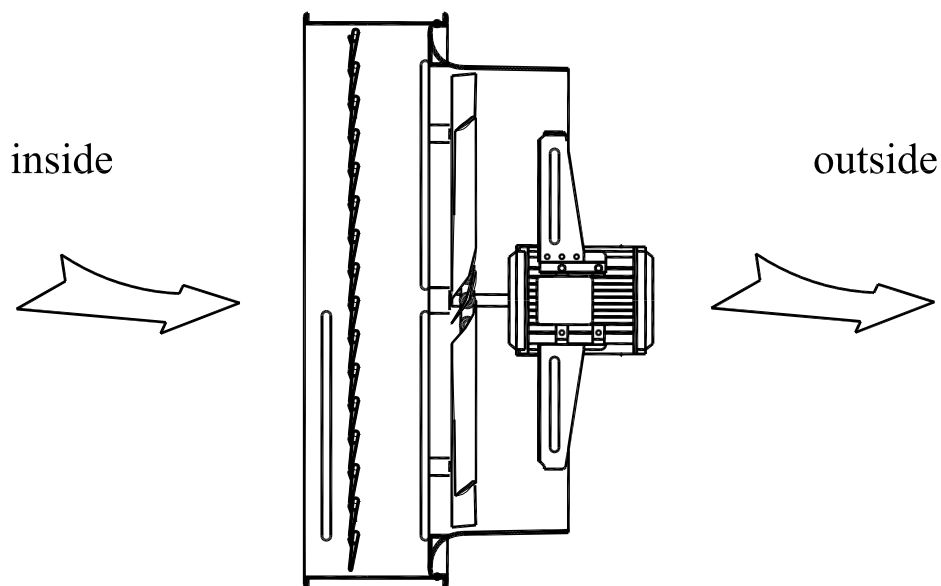
Sketch Map of Exhaust Fan connect Air Ducst ————— 15

Thank you for choosing Excelair Minimal Noise Exhaust Fan!

◇ Exhaust Fan



◇ Exhaust Fan with Anti-Insects Shutter



Please read this manual carefully and keep it for further reference.

Installation of this unit must conform to your local electrical, water supply and environmental codes, rules or regulations and to any applicable International Standard.

Information in this manual is subject to change without notice.

General of Excelair Minimal Noise Exhaust Fan

☆ Excellence

..... Minimal Noise,high efficiency.

..... The Fan design from submarine technology and fan blade can be adjustable freely.

..... Match with Anti-Insects Shutter and can be controlled synchronously. When it stop operation,the shutter will colsed to prevent the insects and dusts entering.

..... Install on wall or window.

☆ Description

◆ Minimal Noise Exhaust Fan description

| | PCJ5.0 | PCJ6.3 |
|---------------------|--------------------------|------------------------|
| Airflow | : 5800m ³ /hr | 8500m ³ /hr |
| Power Supply | : 380V,50Hz | 380V,50Hz |
| Power Consumption | : 158W | 280W |
| Current | : 0.74A | 0.83A |
| Rotary Speed | : 730rpm | 730rpm |
| Net Weight | : 15KG | 17KG |
| Main Unit Dimension | : 626mmX626mmX285mm | 754mmX754mmX285mm |

◆ Anti-Insects Shutter description

| | AIS5.0 | AIS6.3 |
|---------------------|---------------------|-------------------|
| Power Supply | : 220V,50Hz | 220V,50Hz |
| Power Consumption | : 4W | 4W |
| Net Weight | : 10.5KG | 12.5KG |
| Main Unit Dimension | : 656mmX656mmX195mm | 784mmX784mmX195mm |

☆ Precautions

..... The Wall Controller should be installed indoor area advantageous to operate.

Leaving from ground is 1.4 ~ 1.6m.

..... The power supply should be kept within 380V \pm 5%. Each unit should be equipped with 16A overcurrent and circuit breaker.

..... Power installation should conform to local codes ,rules or regulations.

..... The power supply must be switched off before service and maintenance.

☆ Installation Steps

◆ Brick Wall Mounting

- Choose installation location and open a hole of [Ø530 (PCJ5.0) or Ø650 (PCJ6.3)].
- Install exhaust fan and anti-insects shutter.
- Install waterproof cover, seal the weld by silicon sealant.
- Connect the power wire and control cable.
- Check and clean up working place. Move the fan by hand should be smooth. Each part should be connected correct and firm.

◆ Metal Wall Mounting

- Choose installation location and open a hole of [530 x 530mm (PCJ5.0) or 650 x 650mm (PCJ6.3)].
- Install anti-leaking waterproof cover and frame.
- Install angle iron hanger bracket,exhaust fan, anti-insects shutter.
- Deal with outside anti-leaking and seal the weld by silicon sealant.
- Connect the power wire and control cable.
- Install exhaust fan and connect the power wire and control cable. The fan should be kept level.
- Check and clean up working place. Move the fan by hand should be smooth. Each part should be connected correct and firm.

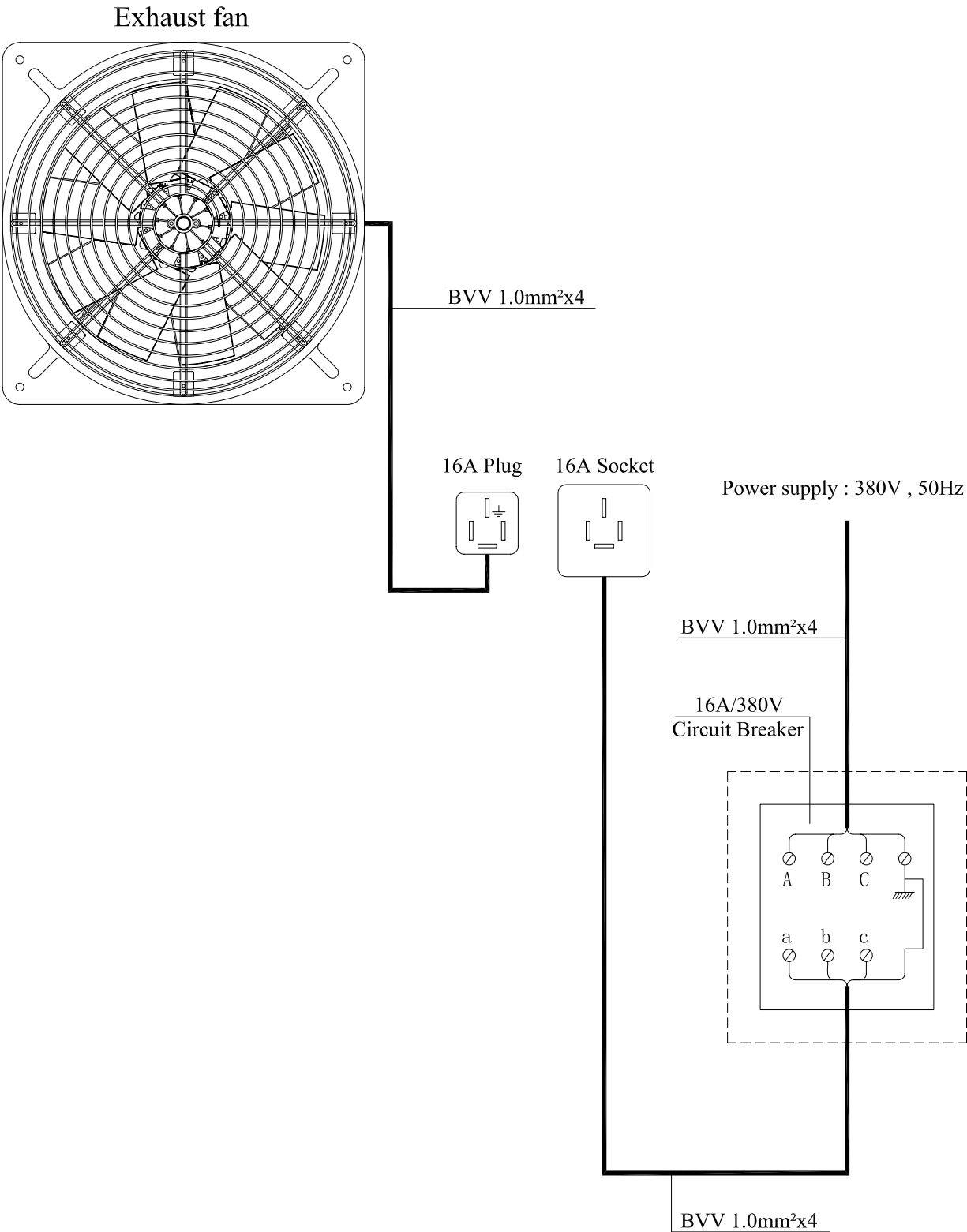
◆ Window Mounting

- Choose installation location and open a hole of [552 x 552mm (PCJ5.0) or 672 x 672mm (PCJ6.3)].
- Install angle iron hanger bracket and frame,waterproof cover,exhaust fan and anti-insects shutter.
- Deal with outside anti-leaking and seal the weld by silicon sealant.
- Connect the power wire and control cable.
- Install exhaust fan and connect the power wire and control cable. The fan should be kept level.
- Check and clean up working place. Move the fan by hand should be smooth. Each part should be connected correct and firm.

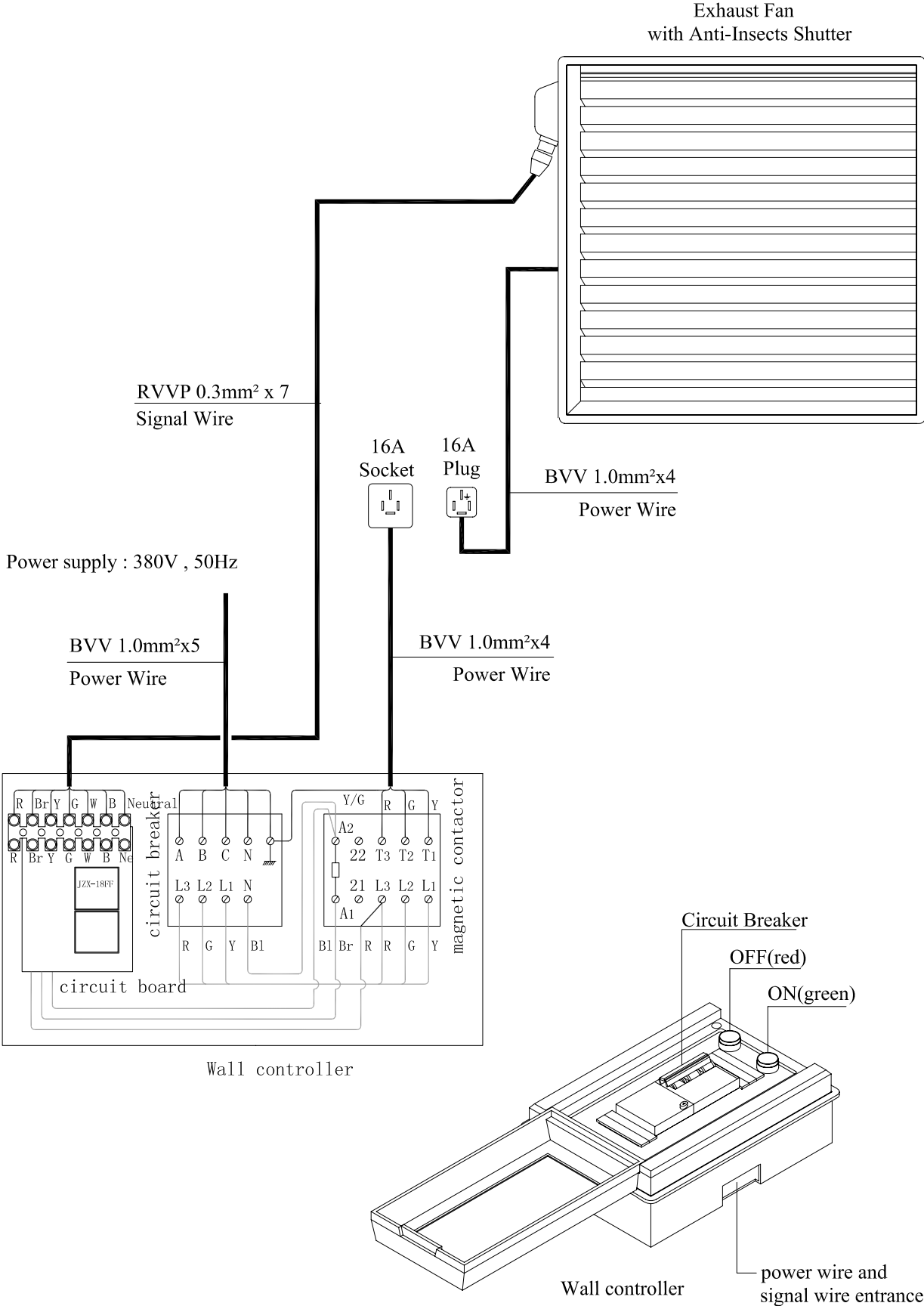
☆ Dismantlement Steps

- For all repair, we suggest you removing the exhaust fan and put it at a safe place at first then do any maintenance.
- Switch off the power supply firstly then disconnect the power wire and control cable.
- Remove the exhaust fan and put it at a safe place then do the maintenance.
- After maintenance,assemble the exhaust fan in reverse order. Check and clean up the work place.

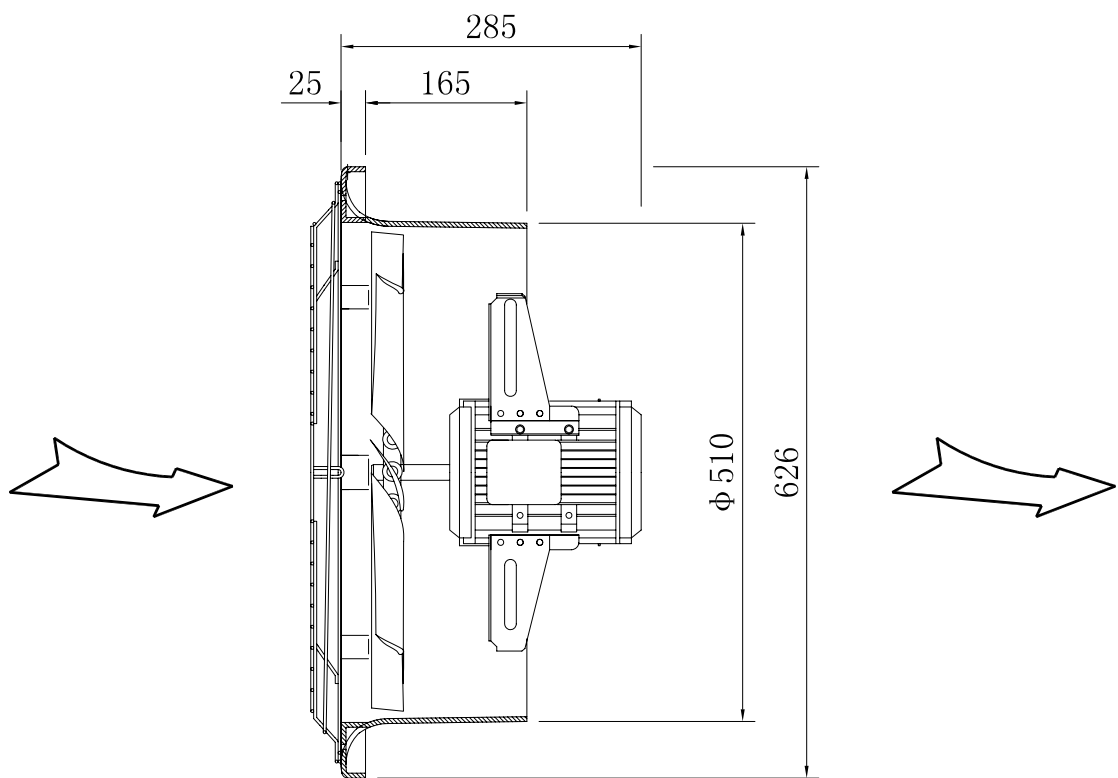
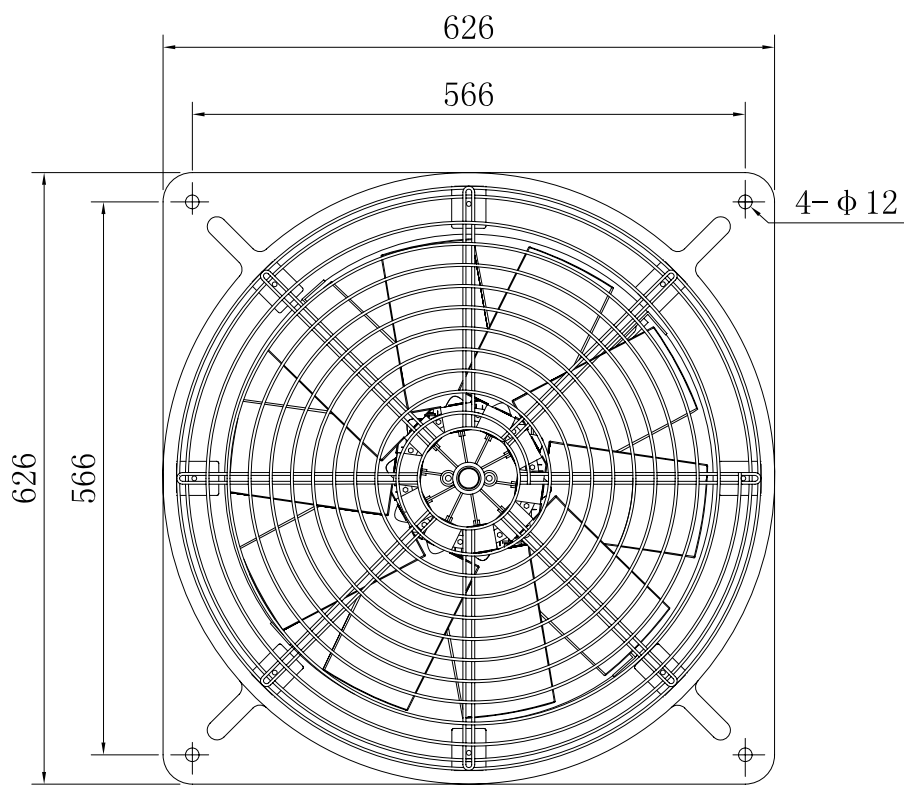
Exhaust Fan Circuit Diagram



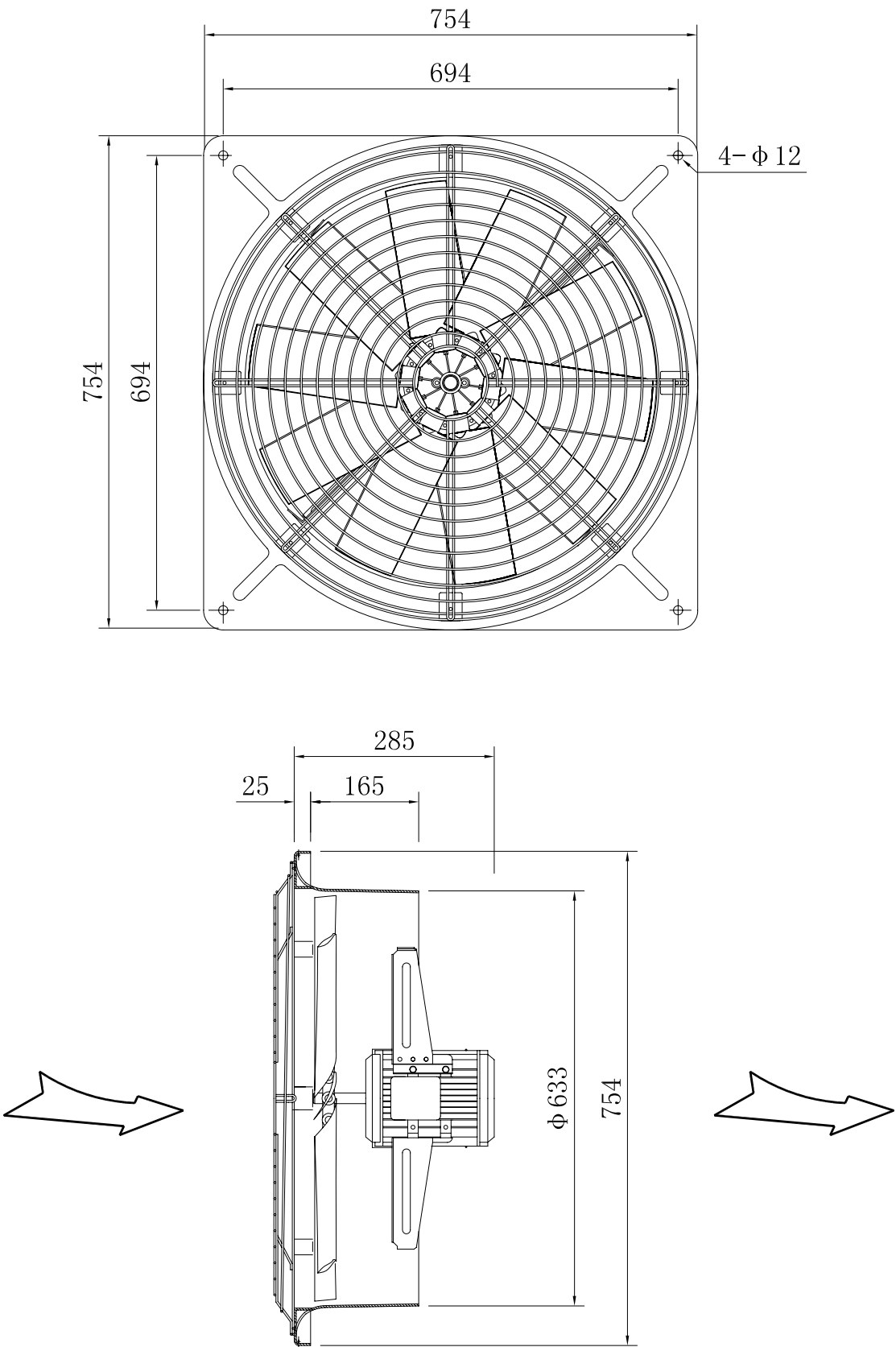
Exhaust Fan with Anti-Insects Shutter Circuit Diagram



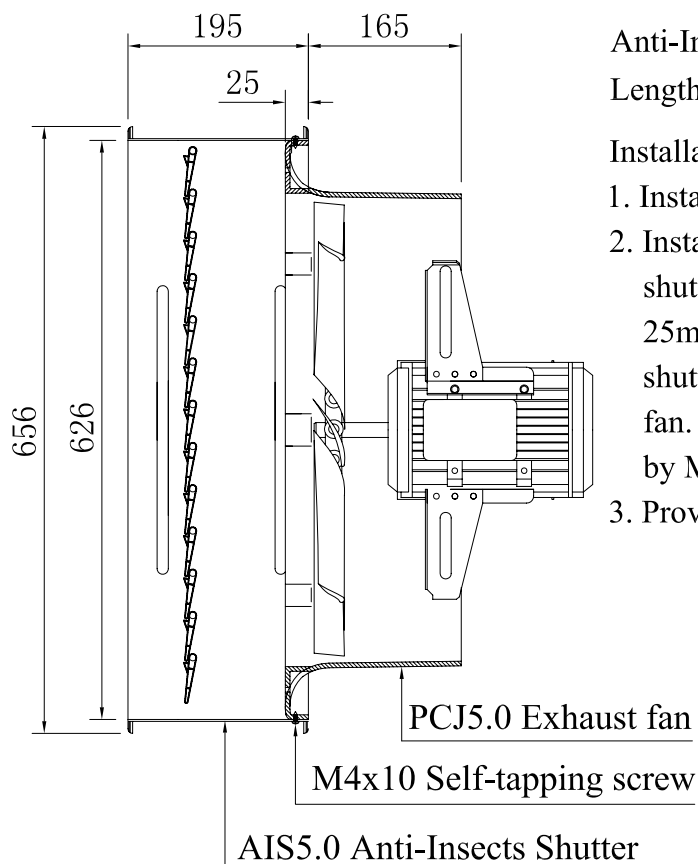
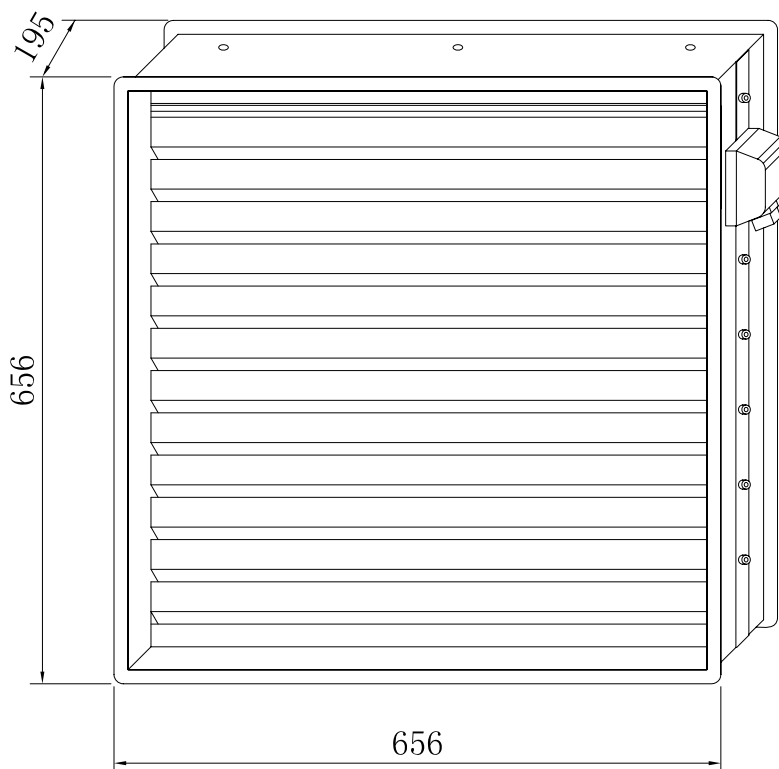
Sketch Map of PCJ5.0 Mounting Dimension



Sketch Map of PCJ6.3 Mounting Diemnsion



Sketch Map of AIS5.0 Anti-Insects Shutter Mounting Dimension



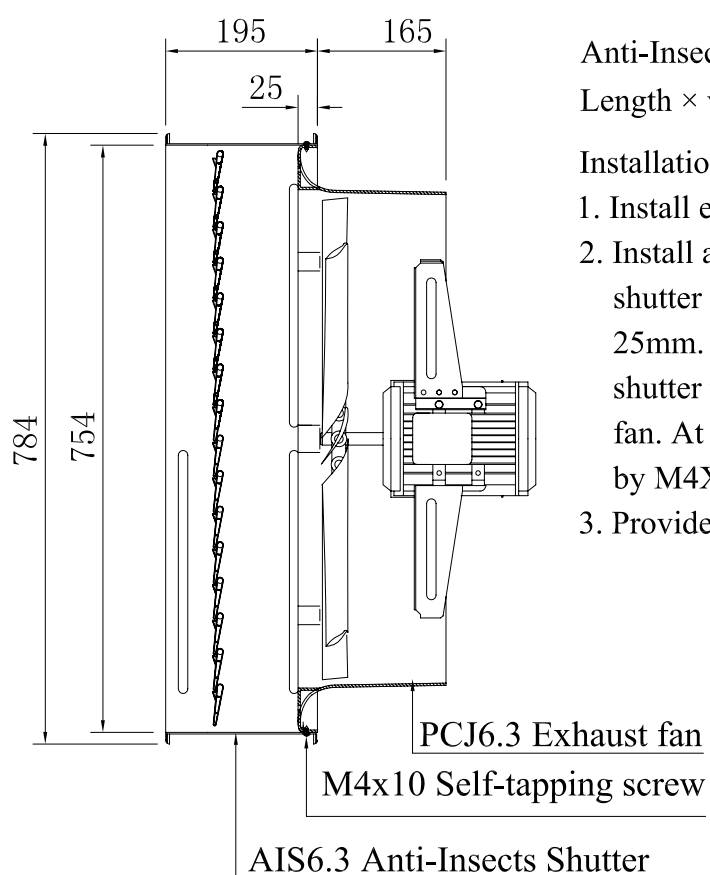
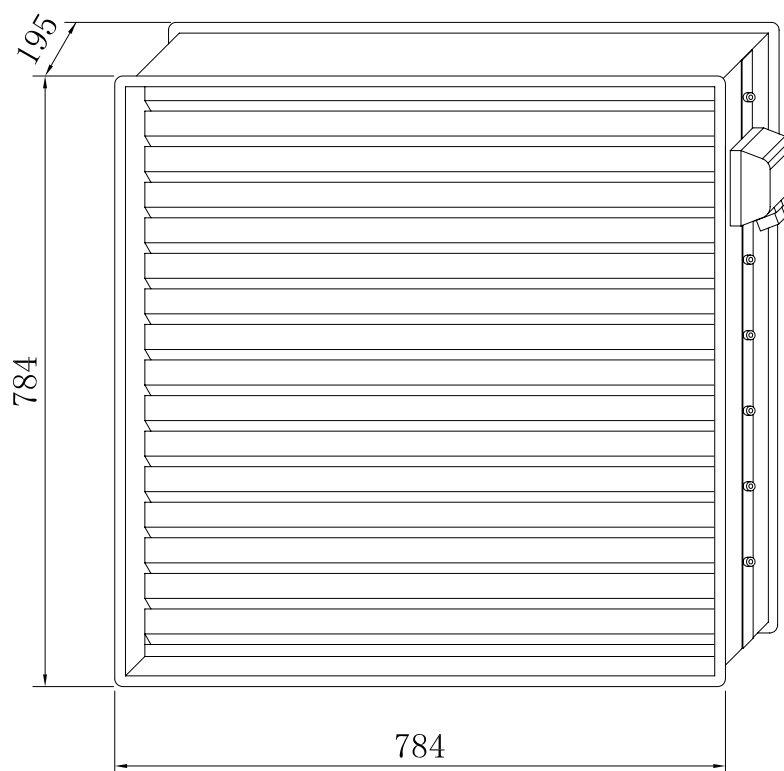
Anti-Insects Shutter Mounting Dimension:

Length \times width = $626_{-1}^0 \times 626_{-1}^0$ mm

Installation steps:

1. Install exhaust fan.
2. Install anti-insects shutter. Put the anti-insects shutter into exhaust fan at first, the depth is 25mm. Then through the hole on anti-insects shutter to open a hole of $\varnothing 3.5$ on the exhaust fan. At last fix the shutter on the exhaust fan by M4X10 self-tapping screw.
3. Provide power supply of 380V.

Sketch Map of AIS6.3 Anti-Insects Shutter Mounting Dimension



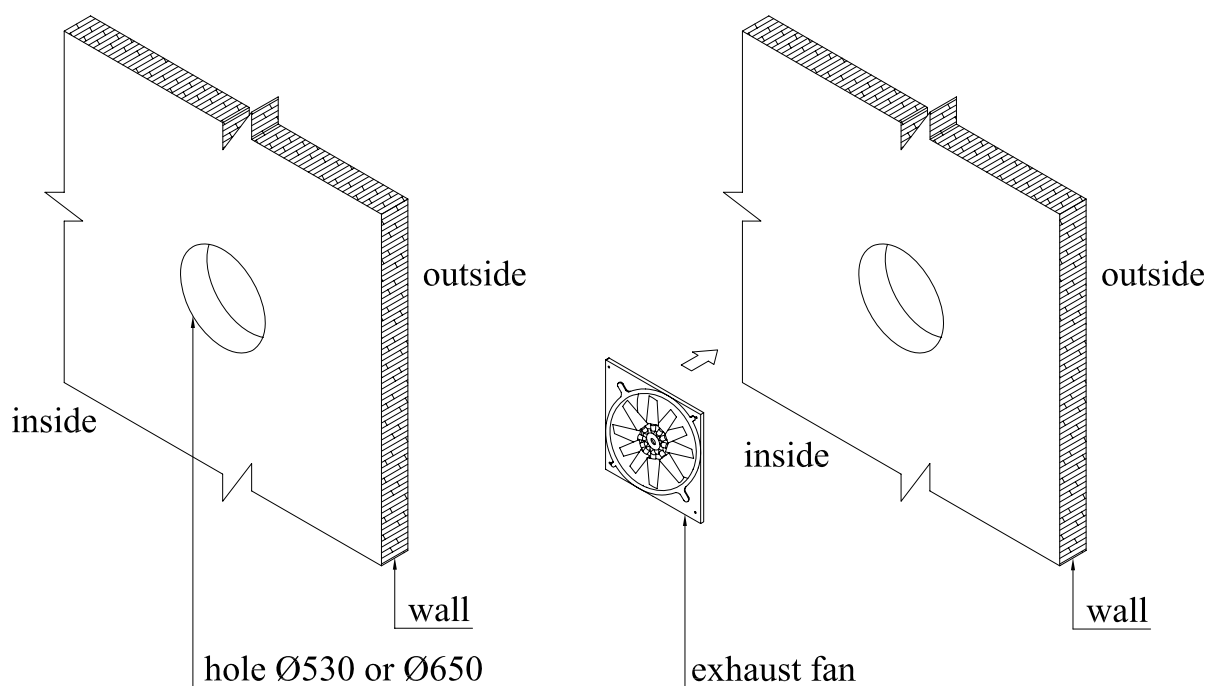
Anti-Insects Shutter Mounting Dimension:

Length \times width = $754_{-1}^0 \times 754_{-1}^0$ mm

Installation steps:

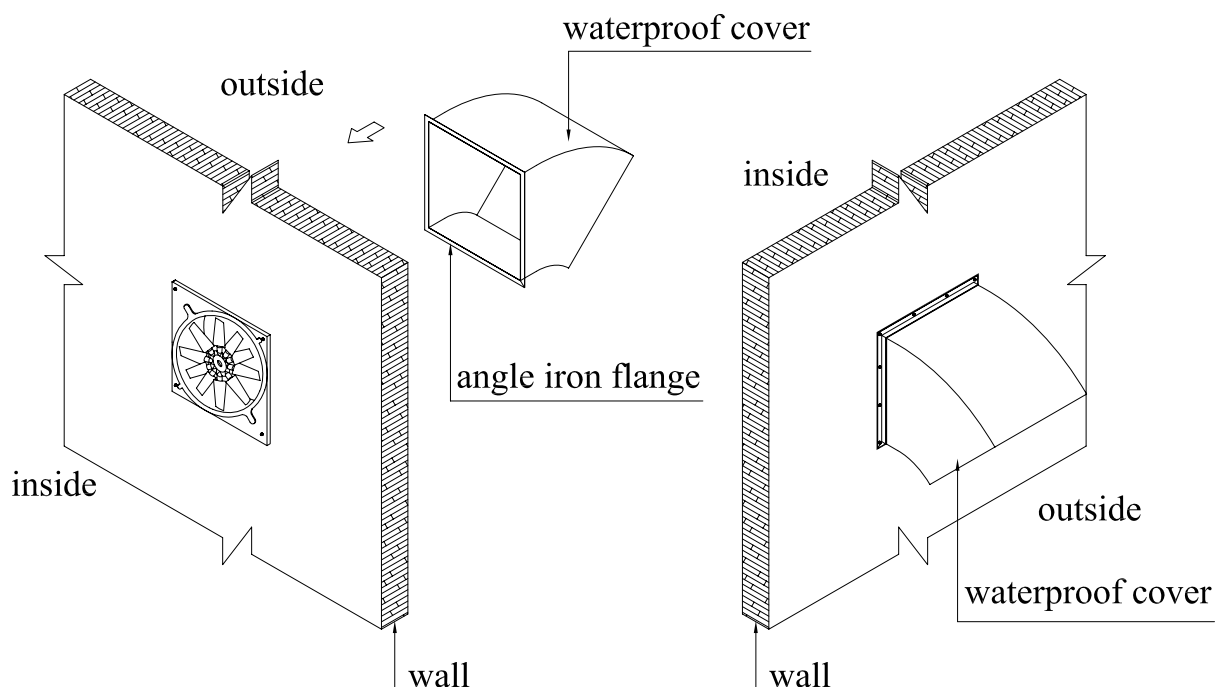
1. Install exhaust fan.
2. Install anti-insects shutter. Put the anti-insects shutter into exhaust fan at first, the depth is 25mm. Then through the hole on anti-insects shutter to open a hole of $\varnothing 3.5$ on the exhaust fan. At last fix the shutter on the exhaust fan by M4X10 self-tapping screw.
3. Provide power supply of 380V.

Sketch Map of Brick Wall Mounting



1. Open a hole on site Ø530 (PCJ5.0) or Ø650 (PCJ6.3) , try to install exhaust fan on higher place.

2. Install exhaust fan, put it into installation hole and fix it by M10 x 100mm expansion bolt.

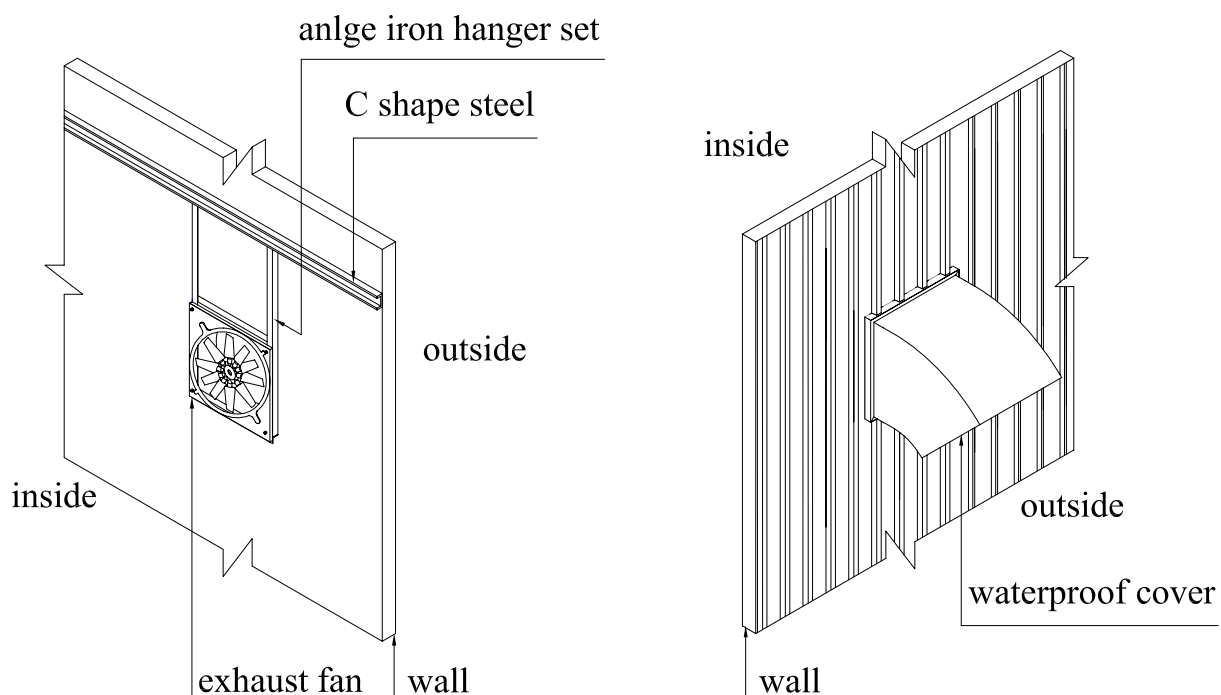


3. Install waterproof cover, put it at outside air outlet and fix it by expansion bolt.

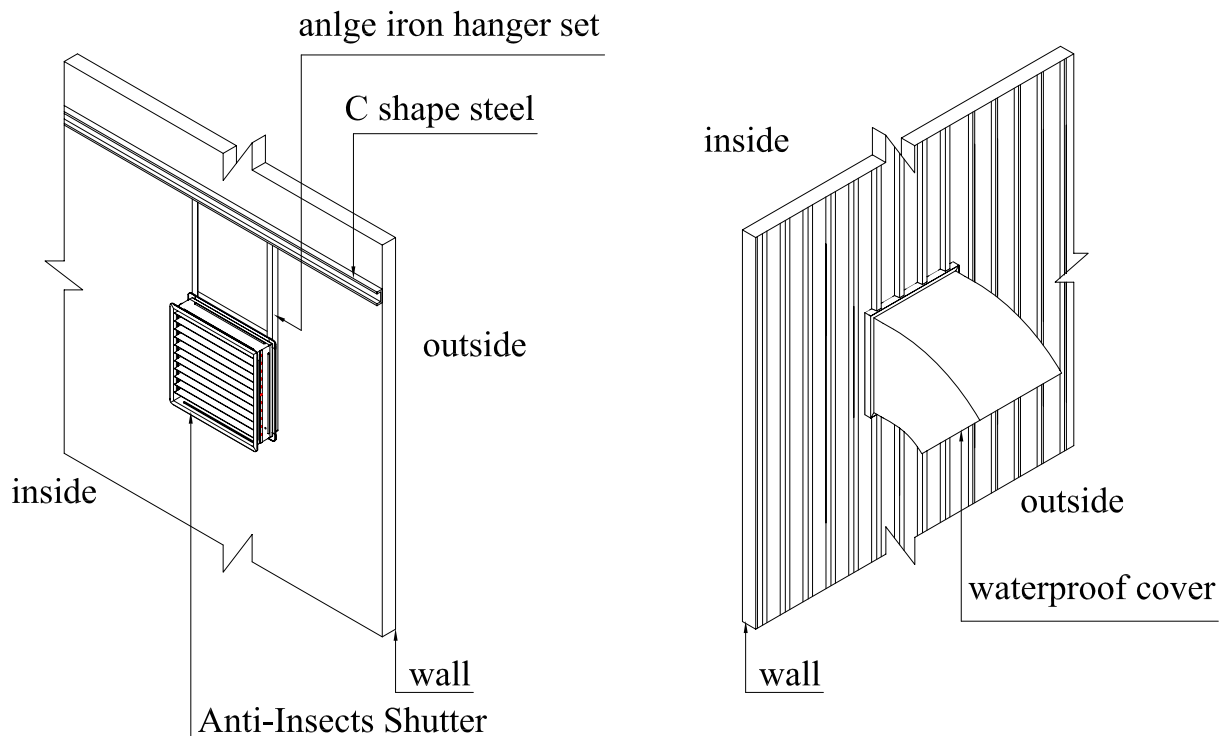
4. Deal with anti-leaking. Seal the weld between flange and wall or waterproof cover gap by Dow-Corning glue silicon sealant.

Sketch Map of Metal Wall Mounting

◆ Exhaust Fan without Anti-Insects Shutter Mounting



◆ Exhaust Fan with Anti-Insects Shutter Mounting

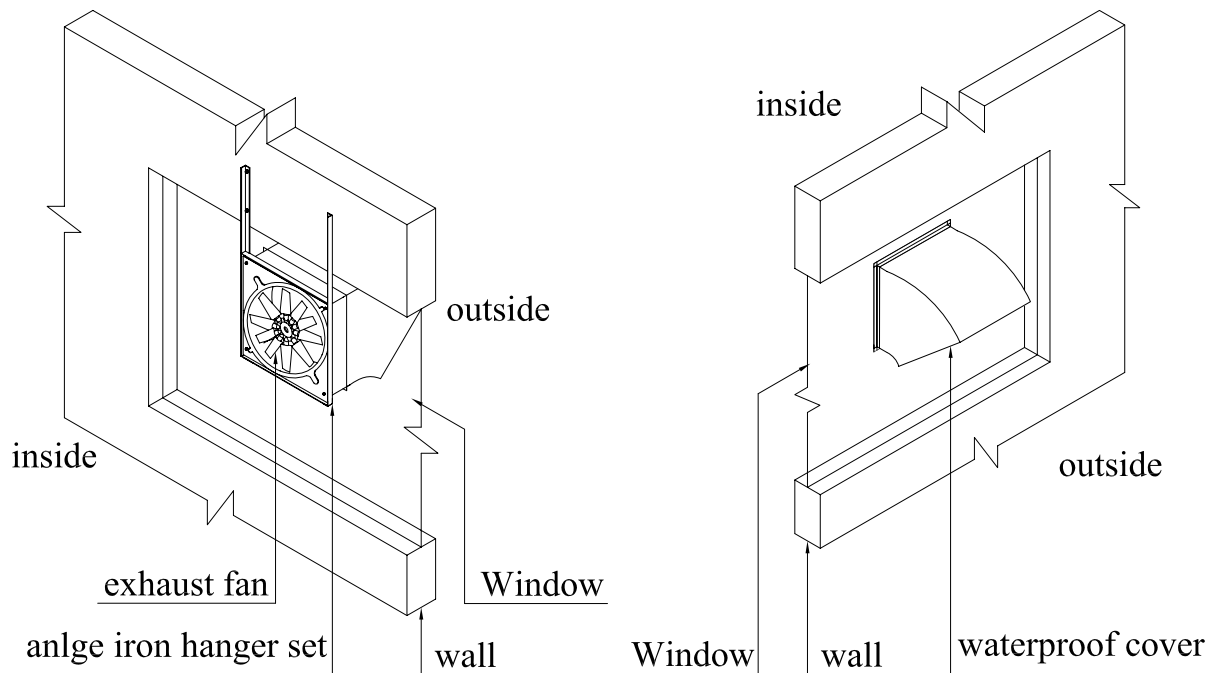


※ Installation requirement:

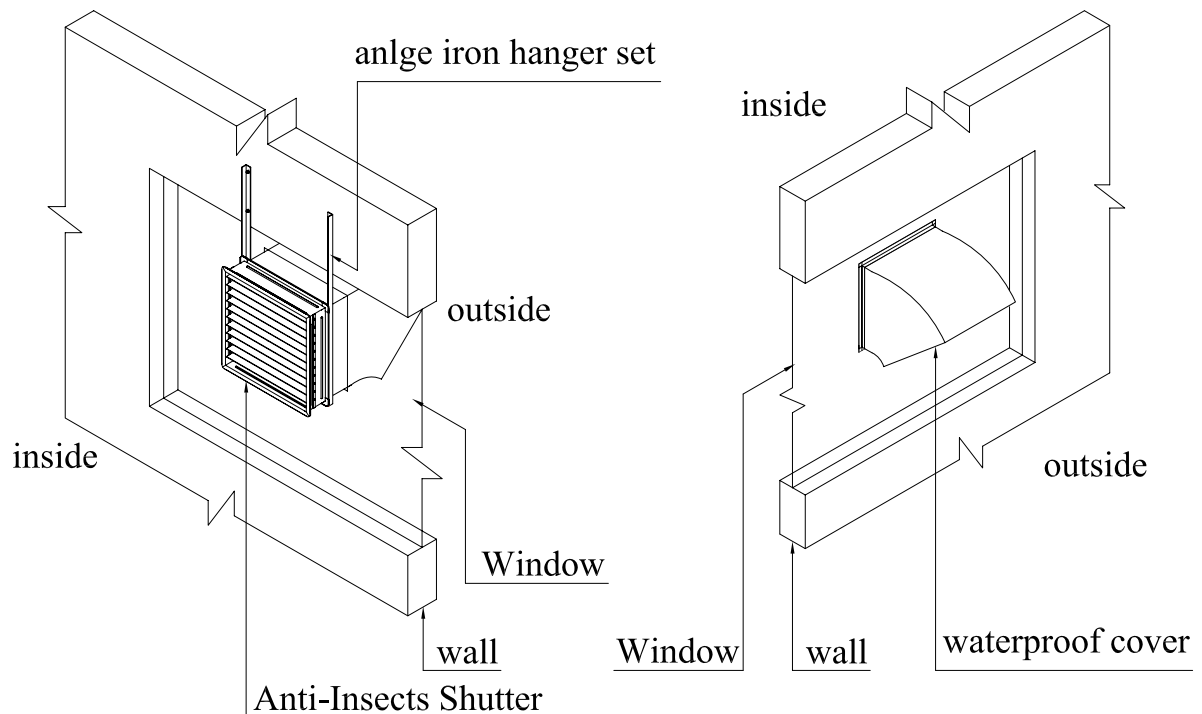
1. Angle iron hanger set is standard, installation firm and strong.
2. Anti-leaking measure is made between waterproof cover and wall.
3. Detailed construction please refer to installation drawing.

Sketch Map of Window Mounting

◆ Exhaust Fan without Anti-Insects Shutter Mounting



◆ Exhaust Fan with Anti-Insects Shutter Mounting

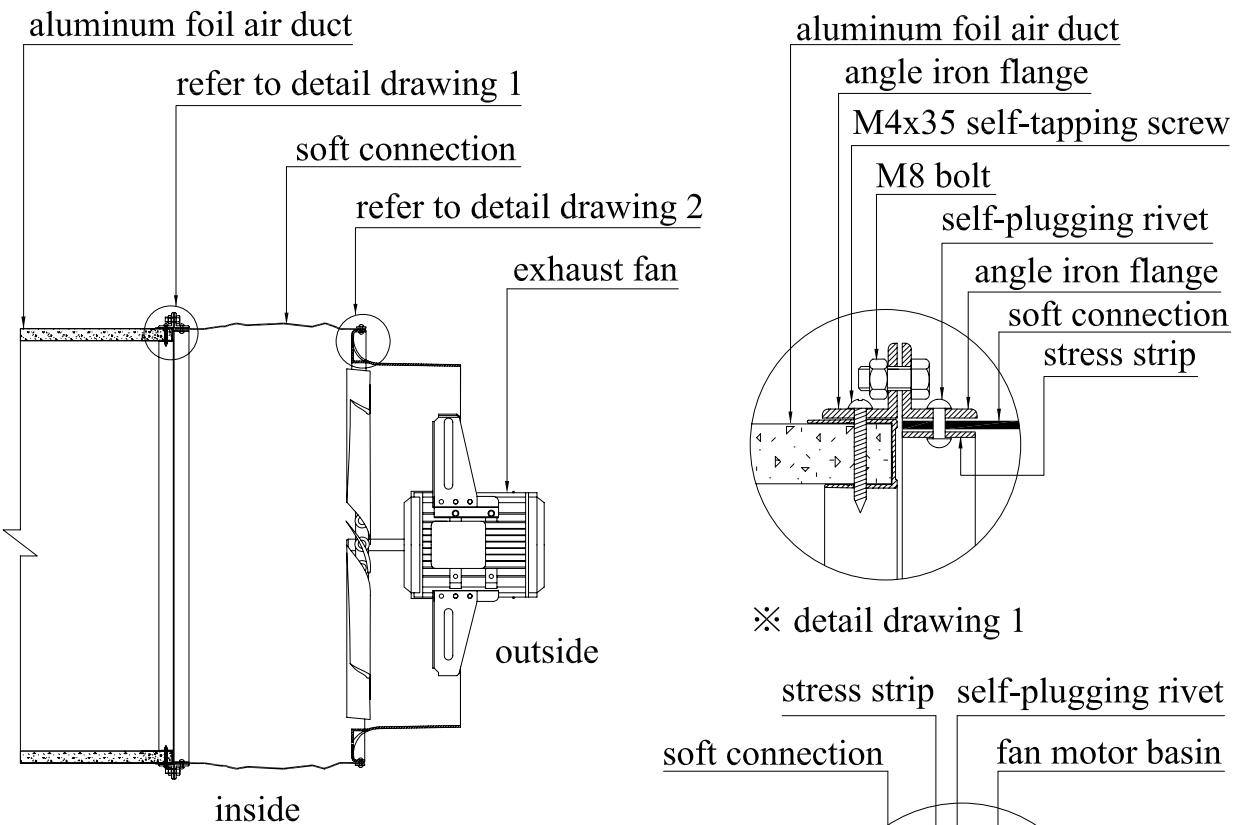


※ Installation requirement:

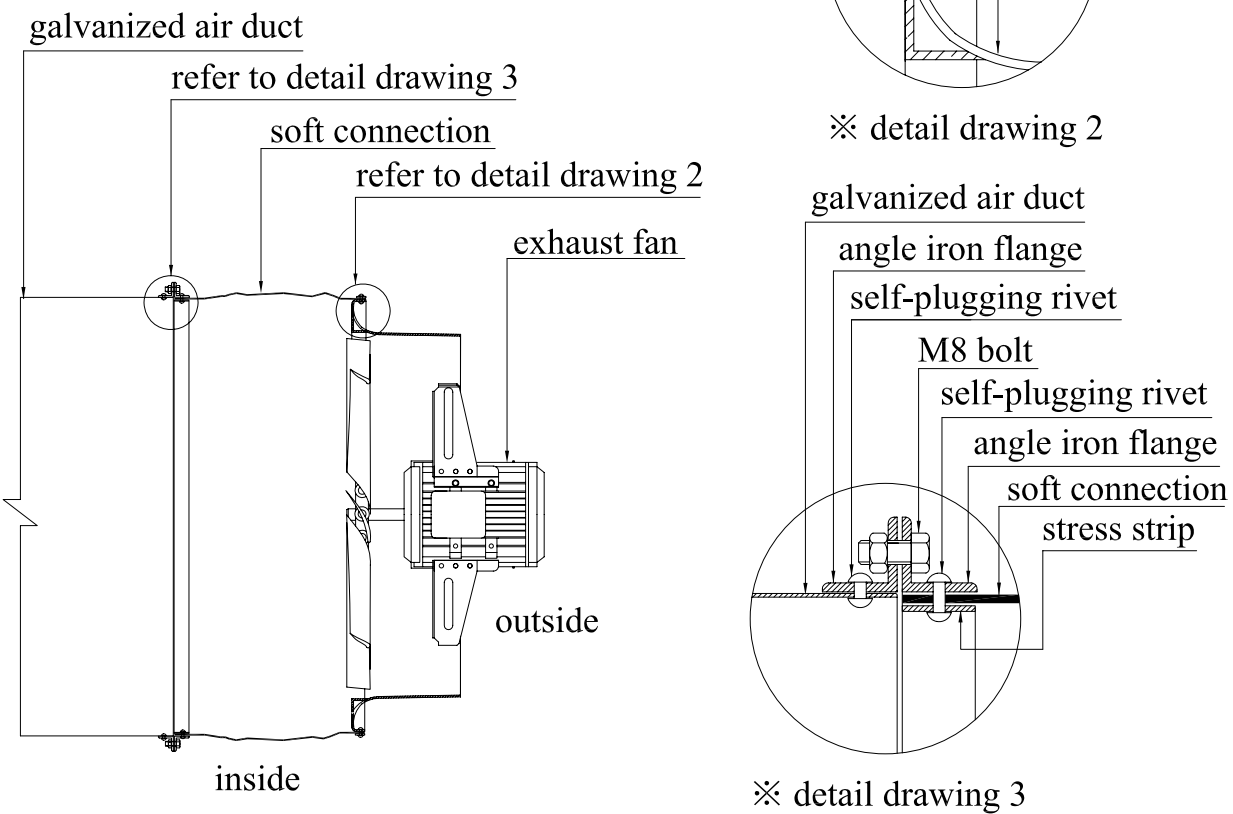
1. Angle iron hanger set is standard, installation firm and strong.
2. Anti-leaking measure is made between waterproof cover and window.
3. Detailed construction please refer to installation drawing.

Sketch map of exhaust fan connect air duct

◆ Exhaust fan connect aluminum foil air duct



◆ Exhaust fan connect galvanized air duct





WEMBLEY GROUP (AUSTRALIA)

WEMBLEY ENTERPRISES LIMITED

Unit X, 9/F, International Industrial Building, No. 2-8, KweiTei Street, N. T. H. K.

TEL: (852) 26990831 FAX: (852) 26058700 E-mail: wembley@excelair.com.hk

<http://www.excelair.com.hk>

EXCELAIR M. & E. INDUSTRIAL CO., LTD.

East Unit, 5th Floor, Second Block, 19, Yunpusan Rd., Yunpu Industrial Zone,
Luo Gang District, Guangzhou Guangdong, China

TEL: 8620-86699861 82308711 FAX: 8620-82305100 E-mail: master@excelairgz.com

SHANGHAI BRANCH (SERVICE SUPPORT DEPT.)

TEL: (8621) 5602 7161, 800-830-3513 FAX: (8621) 6602 1039