



Excelair Roof Exhaust Fan

Model: AI-PRE/6.3 , PRE/6.3

User's Manual



Table of Contents

General of Excelair Roof Exhaust Fan -----3

Excellence -----3

Description -----3

Precautions -----4

Installation Steps -----4

Dismantlement Steps -----4

AI-PRE/6.3 Roof Exhaust Fan Circuit Diagram -----5

PRE/6.3 Roof Exhaust Fan Circuit Diagram -----6

Installation Guide -----7

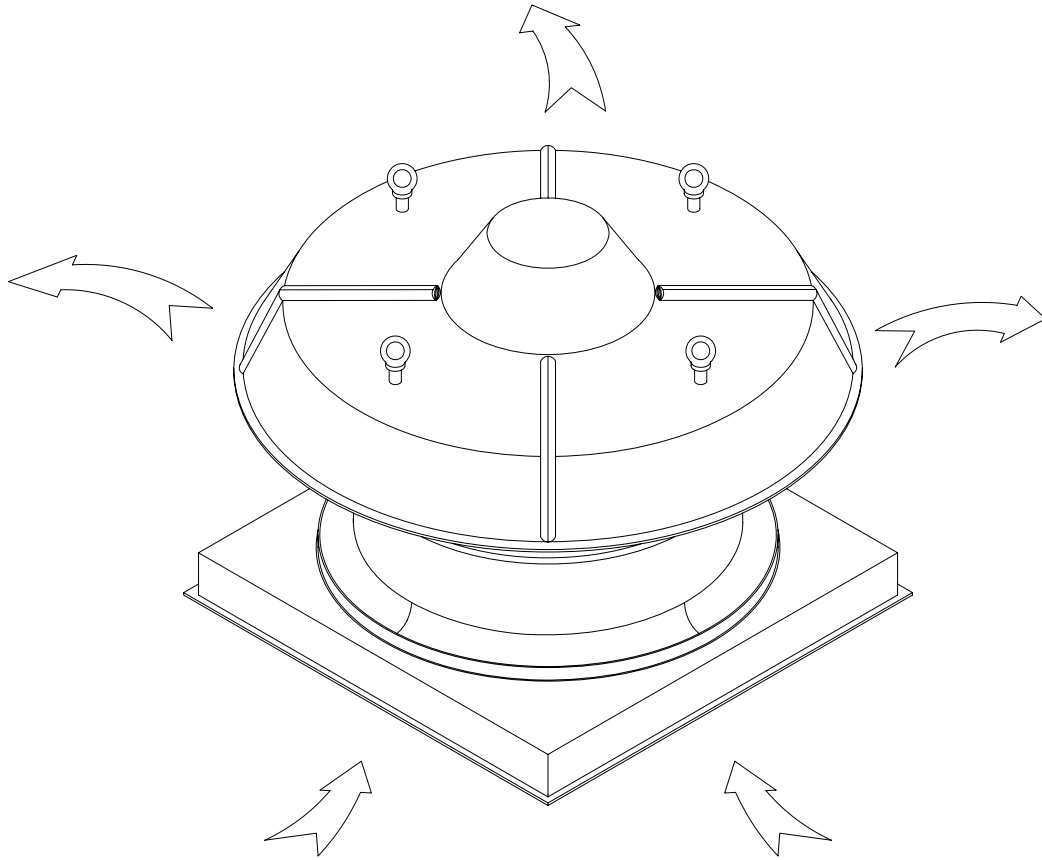
AI-PRE/6.3 Roof Exhaust Fan Accessory -----7

PRE/6.3 Roof Exhaust Fan Accessory -----8

Metal Roof Mounting -----9

Cerment Roof Mounting -----10

Thank you choosing Excelair Roof Exhaust Fan !



Please read this manual carefully and keep it for further reference.

Installation of this unit must conform to your local electrical, water supply and environmental codes, rules or regulations and to any applicable International Standard.

Information in this manual is subject to change without notice.

General of Excelair Roof Exhaust Fan

☆Excellence

-Minimal Noise
-Highest airflow performance, upmost airflow is 11000m³/hr
-Model AI-PRE/6.3 has the function of Anti-insects and Anti-dust
-Install on metal roof or cement roof

☆Description

AI-PRE/6.3

-Airflow : 11000m³/hr
-Power Supply : 380V,50Hz
-Power Consumption : 300W
-Rotary speed : 950 r/min
-Current: 1.2A
-Airflow Direction : Absorb air from bottom and out from upper
-Outlet Dimension : 800mmX800mm
-Net Weight : 36KG
-Main Unit Dimension : 1030mmX1030mmX727mm

PRE/6.3

-Airflow : 11000m³/hr
-Power Supply : 380V,50Hz
-Power Consumption : 300W
-Rotary speed : 950 r/min
-Current: 1.2A
-Airflow Direction : Absorb air from bottom and out from upper
-Outlet Dimension : 800mmX800mm
-Net Weight : 30KG
-Main Unit Dimension : 1030mmX1030mmX727mm

☆Precautions

-The Wall Controller should be installed indoor area advantageous to operate.
Leaving from ground is 1.4-1.6m
-The power supply should be within $380V \pm 5\%$. Each unit should be equipped with 16A overcurrent and circuit breaker.
-Power installation should conform to local codes, rules or regulations.
-Exhaust Fan should be installed no more than 0.5° from horizontal.
-The power supply must be switched off before service and maintenance.
-Fasten the safety belt when work high above the ground.
-Put the caution board of "Working area, no admittance" within working area.
-Workers should have strong sense of safety. Avoid tools and accessories falling.

☆Installation Steps

Metal Roof Mounting

-Choose installation location and open a hole of 790X790mm.
-Install support angle iron and support airduct.
-Install waterproof cover, seal the weld by silicon sealant.
-Install exhaust fan and connect the power wire and control cable. The fan should be kept level.
-Check and clean up working place. Move the fan by hand should be smooth. Each part should be connected correct and firm.

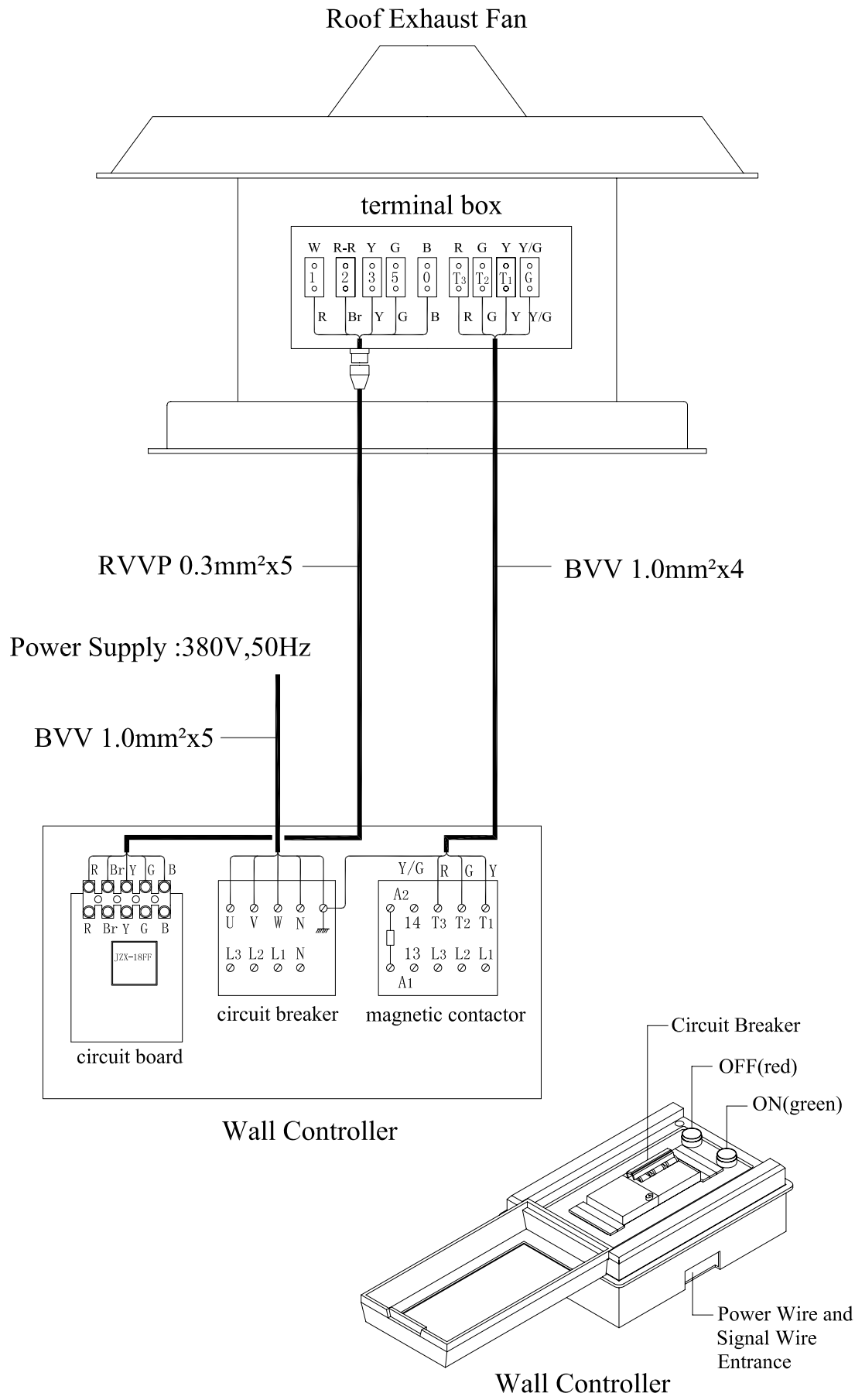
Cement Roof Mount

-Choose installation location and open a hole of $\varnothing 640\text{mm}$.
-Build cement base(790X790X250mm); add waterproof additive into cement; coat 2 layers waterproof additive after the cement base finished.
-Install exhaust fan and connect the power wire and control cable. The fan should be kept level.
-Check and clean up working place. Move the fan by hand should be smooth. Each part should be connected correct and firm.

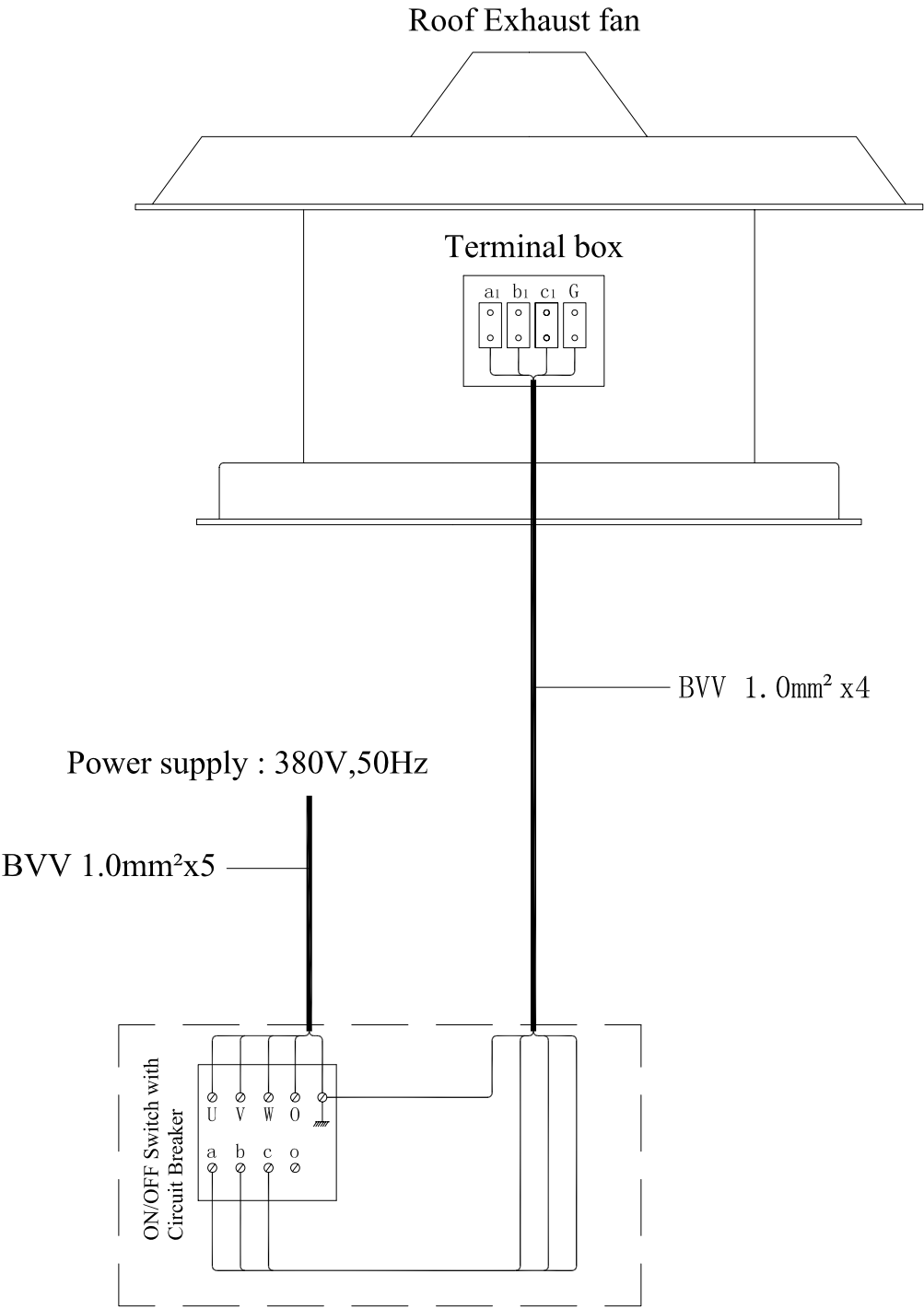
☆Dismantle Steps

-For all repair, we suggest you removing the exhaust fan and put it at a safe place at first then do any maintenance.
-Disconnect the power wire and control cable.
-Take out the self-tapping screw between the exhaust fan base and support airduct.
-Remove the exhaust fan and put it at a safe place then do the maintenance.
-After maintenance, assemble the exhaust fan in reverse order. Check and clean up the work place.

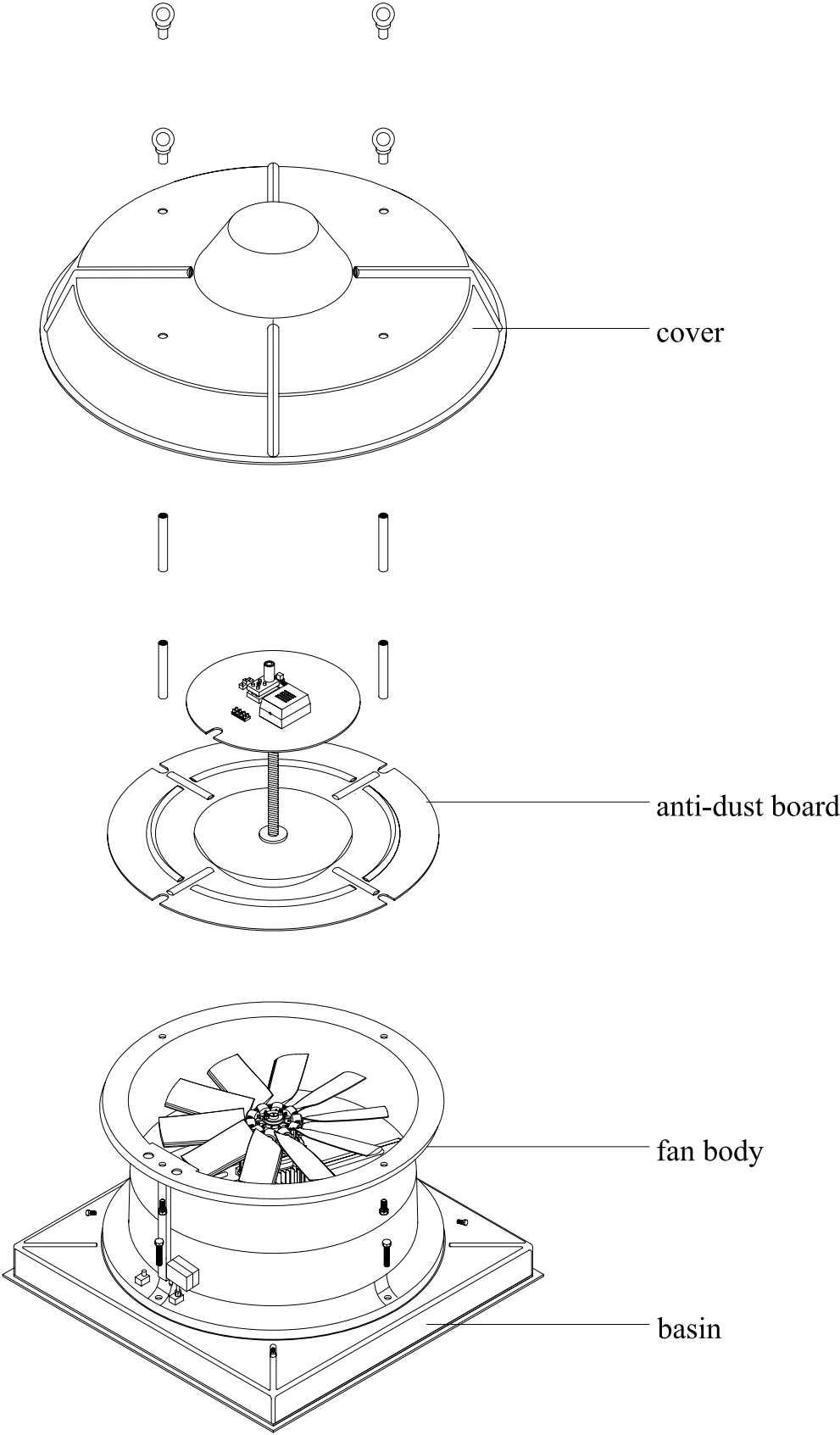
AI-PRE/6.3 Roof Exhaust fan Circuit Diagram



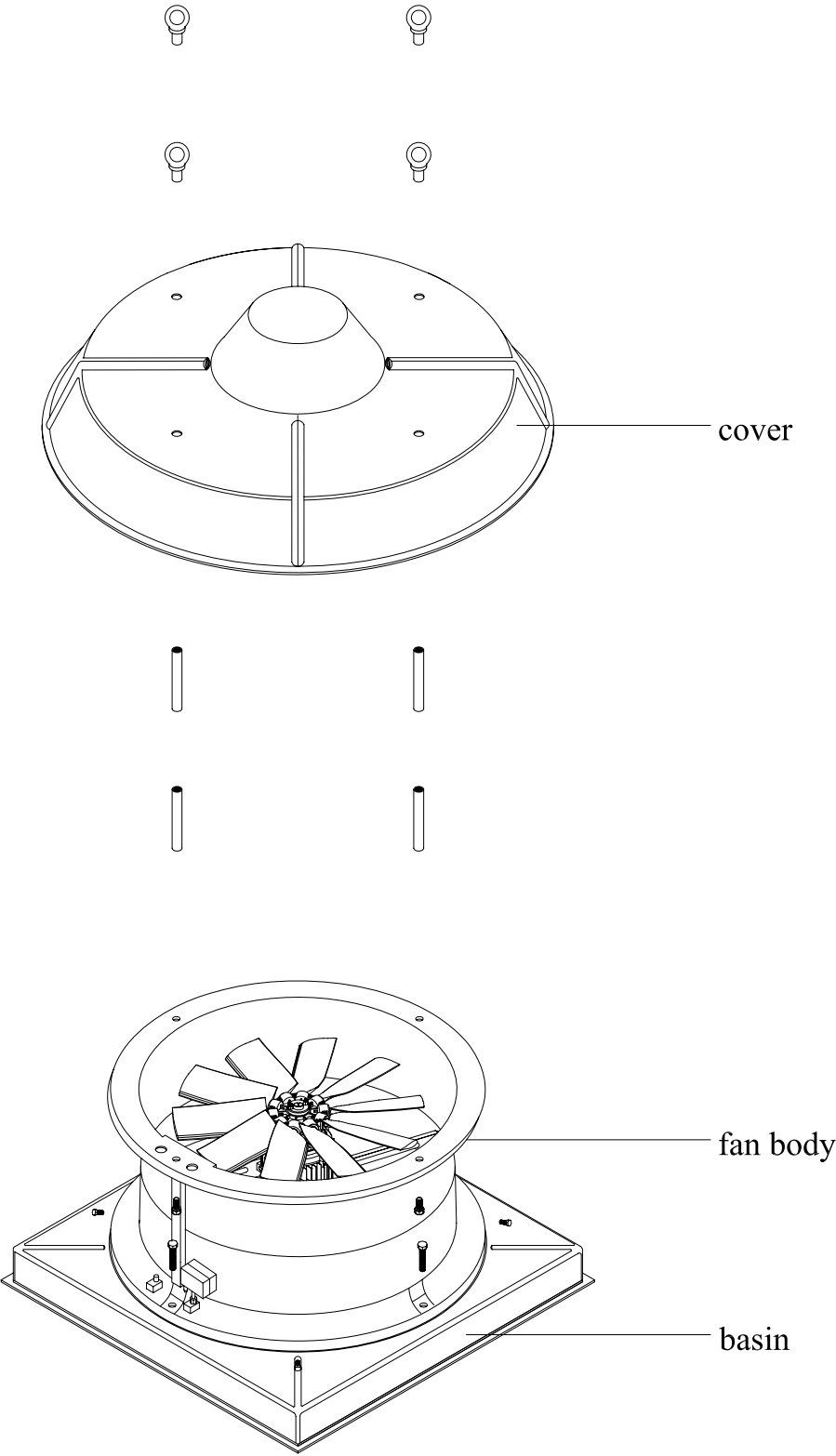
PRE/6.3 Roof Exhaust fan Circuit Diagram



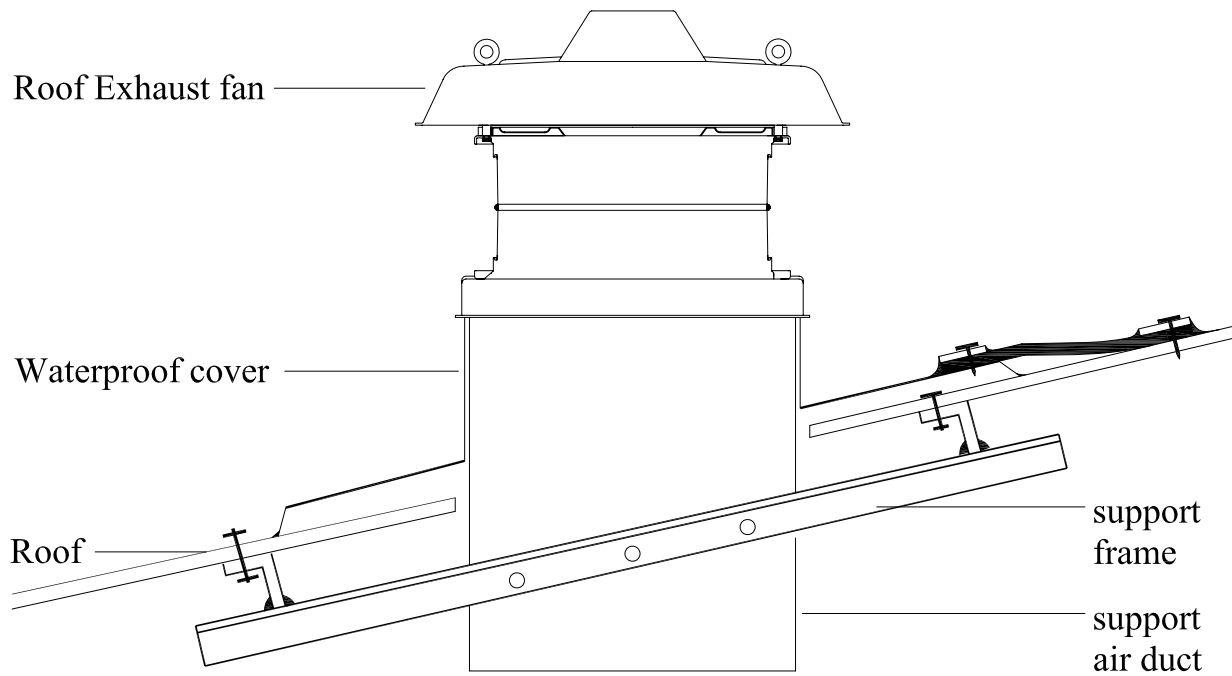
AI-PRE/6.3 Roof Exhaust fan Accessory



PRE/6.3 Roof Exhaust fan Accessory



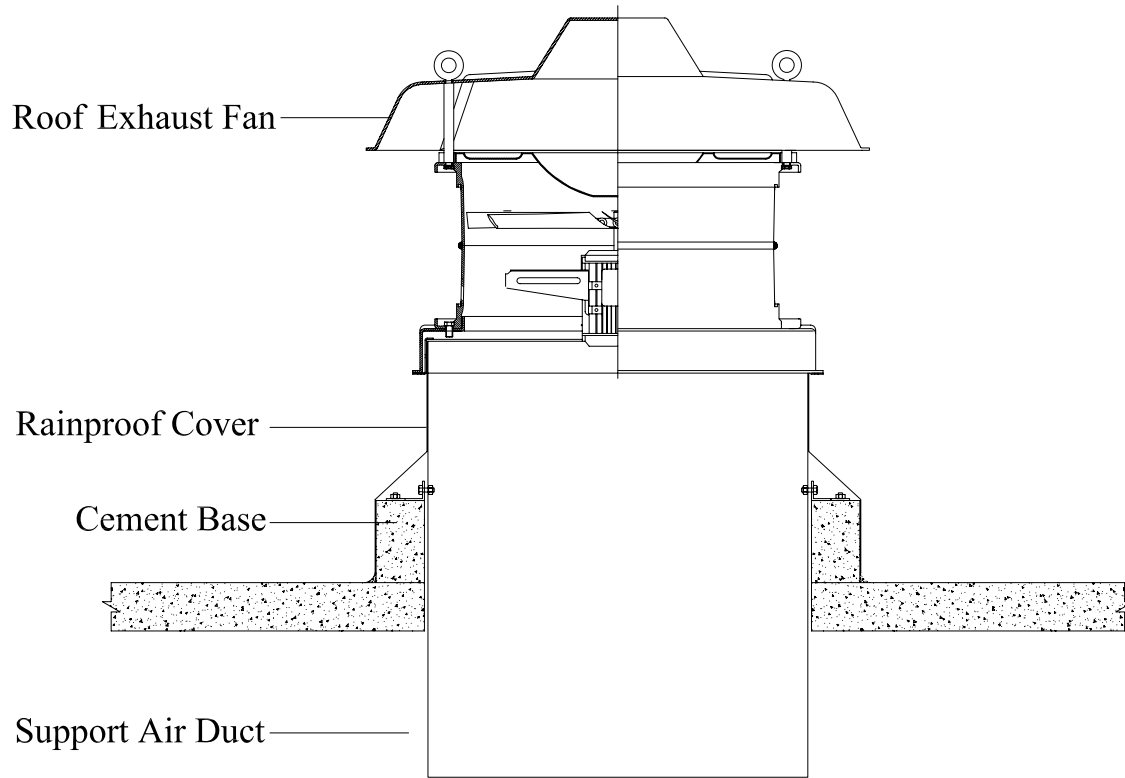
Metal Roof Mounting



Installation Requirement:

- 1.The bottom of Roof exhaust fan should be 150mm higher than metal roof.
- 2.It should be taken the anti-leakage measure between the waterproof cover and roof.
- 3.Please refer to the installation instruction in details.

Cement Roof Mounting



Installation Requirement:

1. The bottom of Roof Exhaust fan should be 250~300mm higher than cement roof.
2. It should be taken the anti-leakage measure between the cement base and roof.
3. Please refer to the installation instruction in details.

WEMBLEY GROUP(AUSTRALIA)

WEMBLEY ENTERPRISES LIMITED

Unit X,9/F,International Industrial Building,No.2-8,KweiTei Street,N.T.H.K.

TEL:(852)26990831 FAX:(852)26058700 E-mail:wembley@excelair.com.hk

<http://www.excelair.com.hk>

EXCELAIR M.& E. INDUSTRIAL CO., LTD.

East Unit, 5th Floor, Second Block, 19, Yunpusan Rd.,Yunpu Industrial Zone,

Luo Gang District, Guangzhou Guangdong, China

TEL:8620-86699861 82308711 FAX:8620-82305100

E-mail:master@excelairgz.com